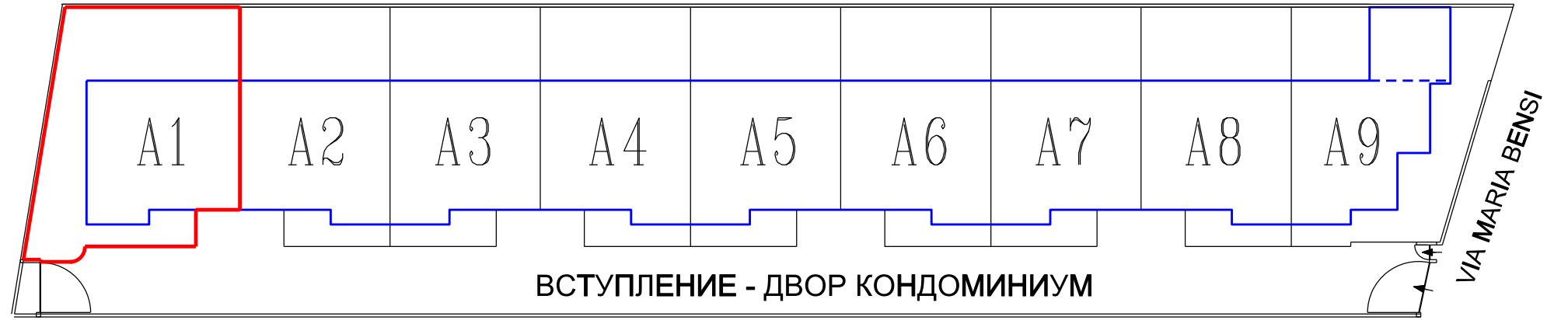
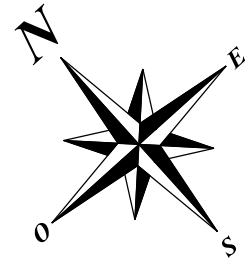
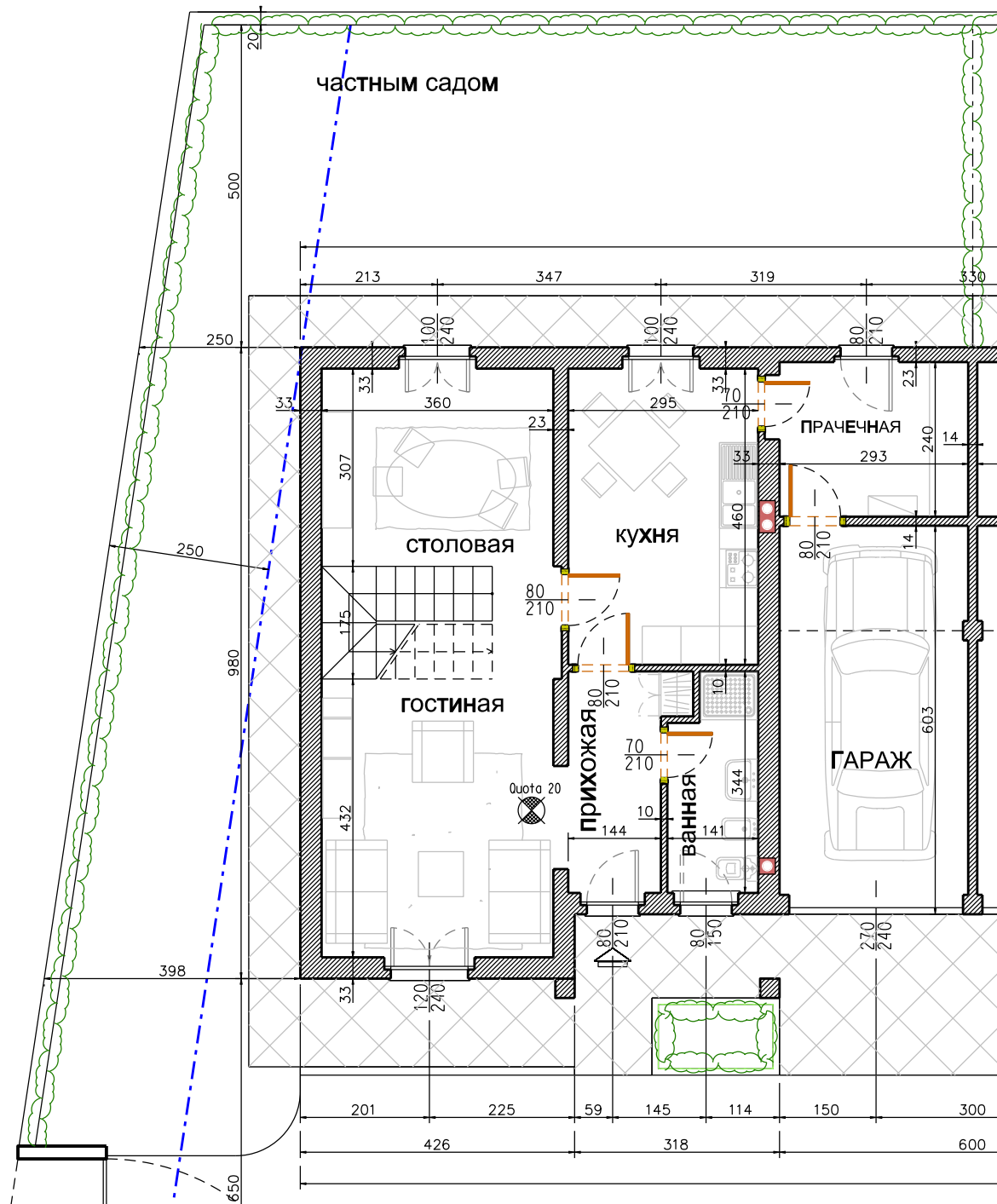


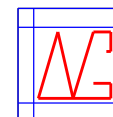
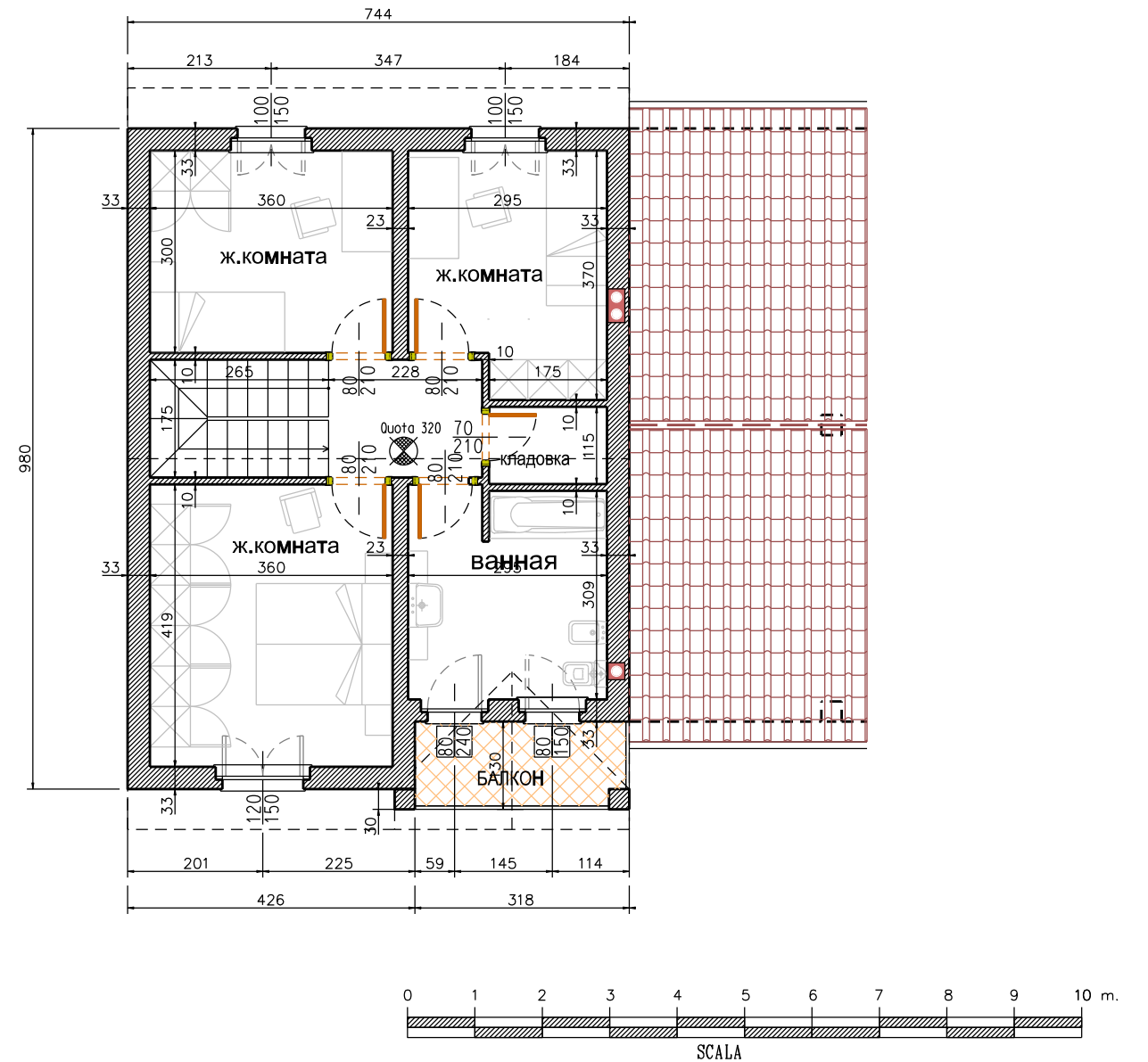
МЕСТО



ПЕРВЫЙ ЭТАЖ



ВТОРОЙ ЭТАЖ



Impresa GENUARDI
 dott.Ing.Antonio Genuardi
 Project Manager Operazioni Immobiliari
 Corso Garibaldi 4 - Valenza (AL) - Italia

Comune: ALESSANDRIA
 Progetto: COSTRUZIONE DI N. 9 VILLETTE
 A SCHIERA IN VIA MARIA BENSI

unita' A1	Tav.
	1
Oggetto: PLANIMETRIE	Scala: 1:100