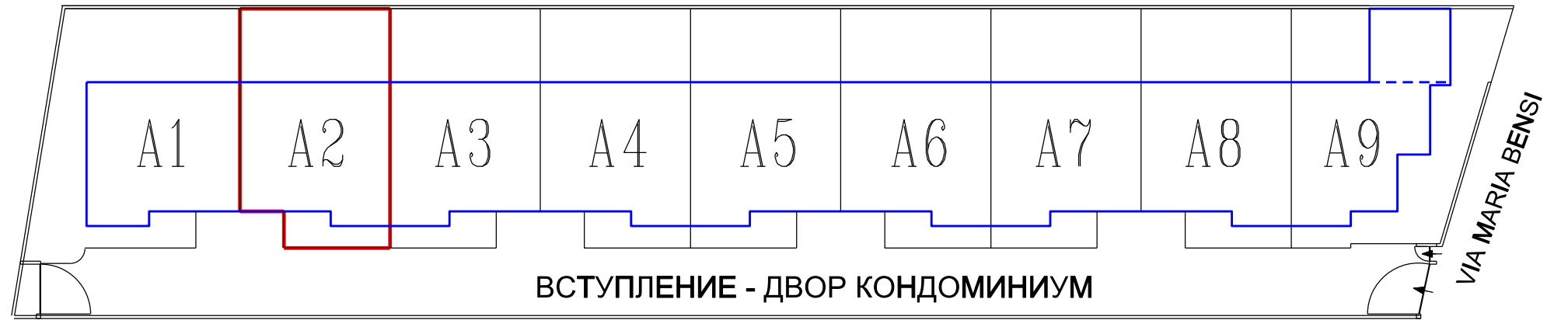
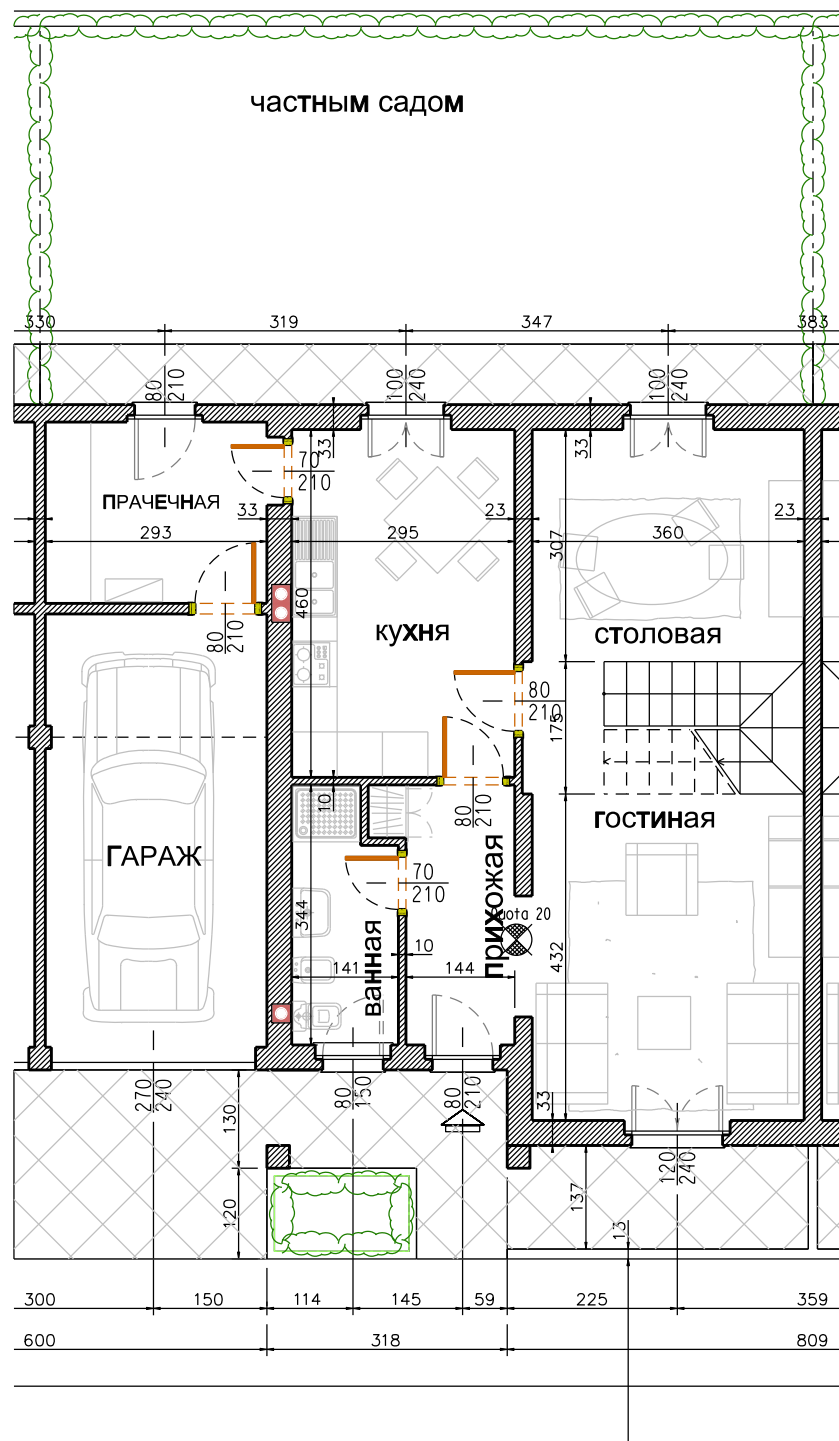


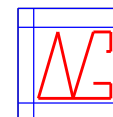
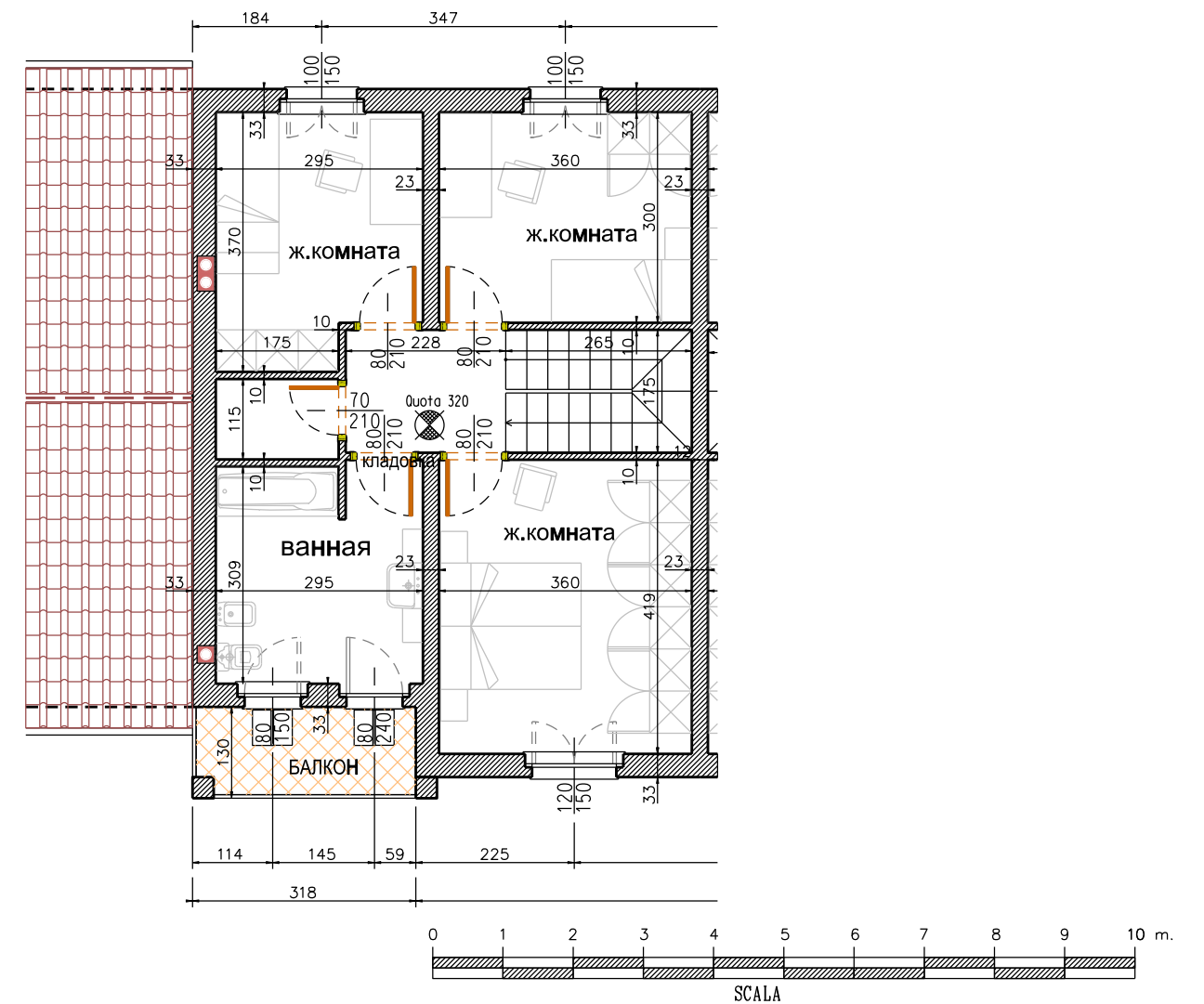
МЕСТО



ПЕРВЫЙ ЭТАЖ



ВТОРОЙ ЭТАЖ



Impresa GENUARDI
dott.Ing.Antonio Genuardi
Project Manager Operazioni Immobiliari
Corso Garibaldi 4 - Valenza (AL) - Italia

Comune: ALESSANDRIA
Progetto: COSTRUZIONE DI N. 9 VILLETTE
A SCHIERA IN VIA MARIA BENSI

| | | |
|-----------|----------------------|--------------|
| unita' A2 | Oggetto: PLANIMETRIE | Tav. |
| | | Scala: 1:100 |