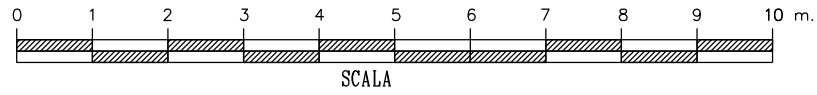
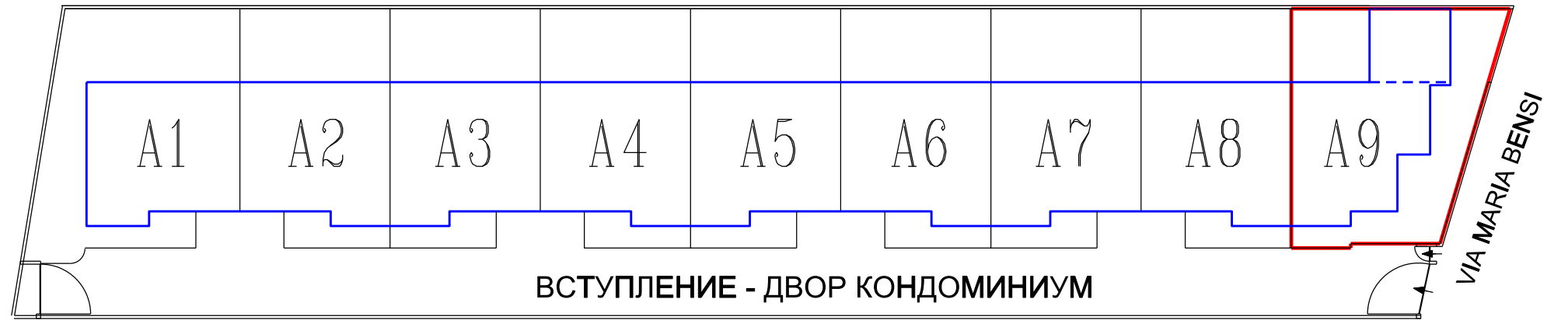
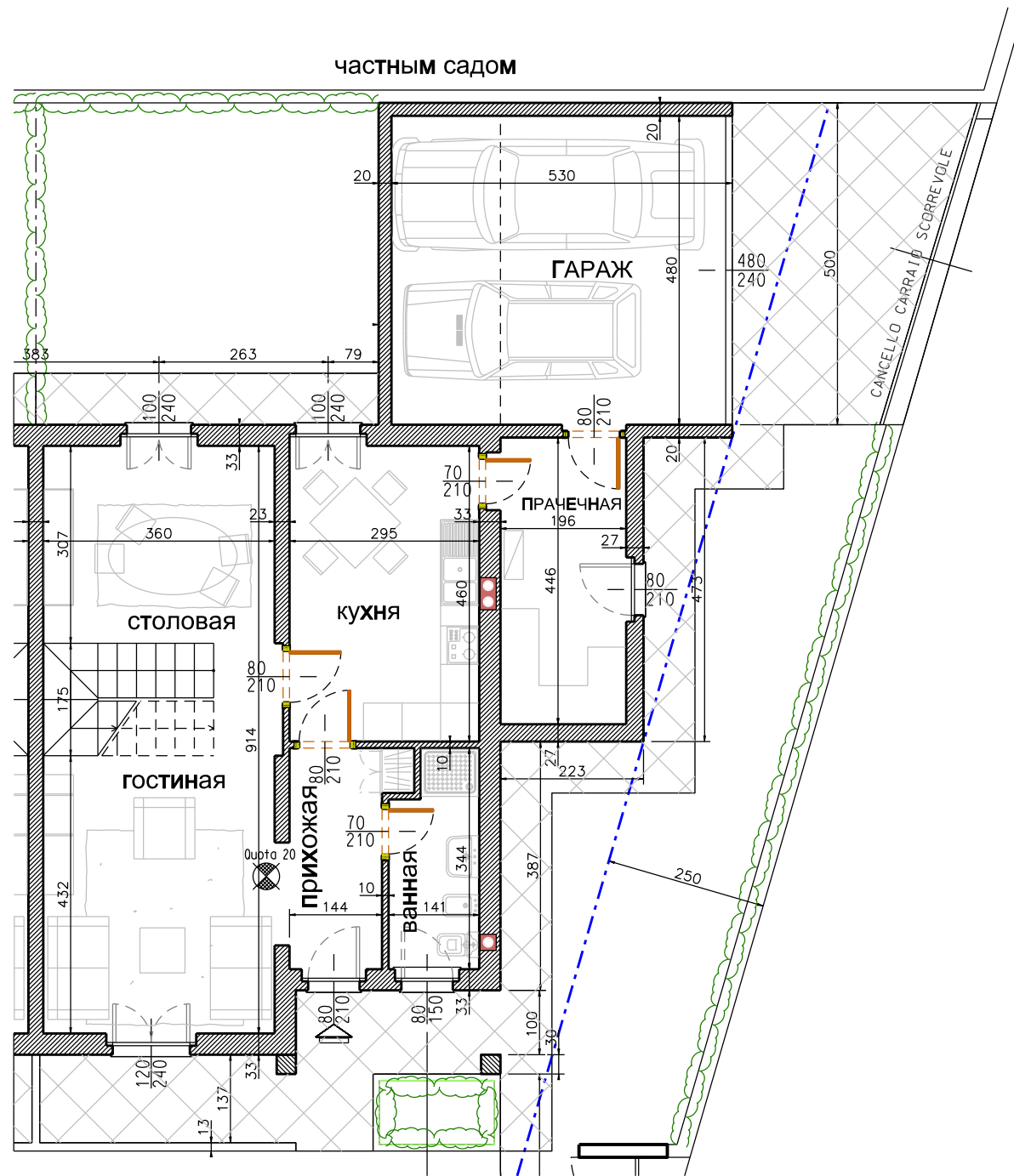


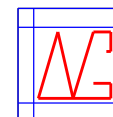
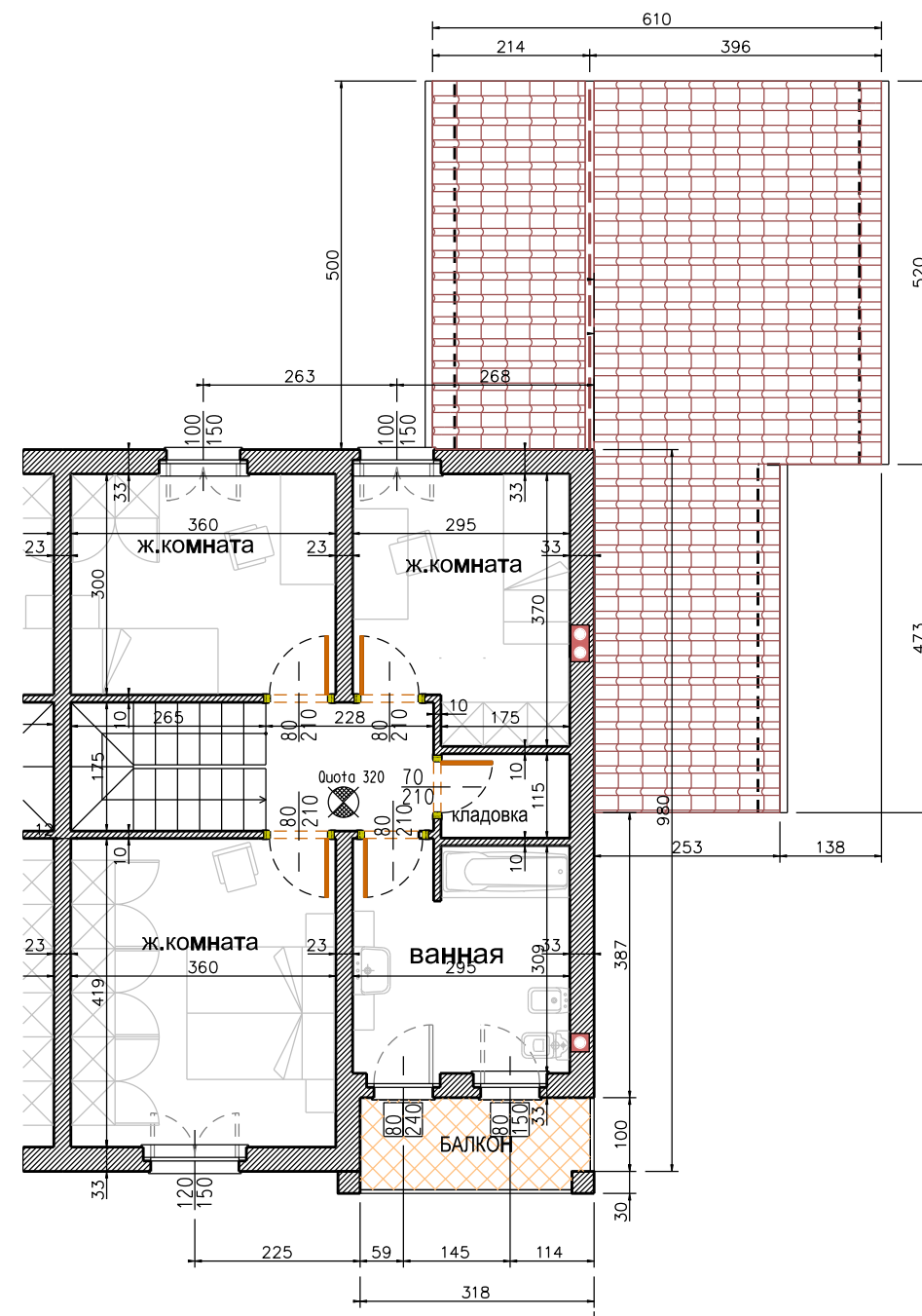
МЕСТО



ПЕРВЫЙ ЭТАЖ



ВТОРОЙ ЭТАЖ



Impresa GENUARDI
dott.Ing. Antonio Genuardi
Project Manager Operazioni Immobiliari
Corso Garibaldi 4 - Valenza (AL) - Italia

Comune: ALESSANDRIA
Progetto: COSTRUZIONE DI N. 9 VILLETTE
A SCHIERA IN VIA MARIA BENSI

| | | | |
|-----------|----------------------|--------------|--------|
| unita' A9 | Oggetto: PLANIMETRIE | Scala: 1:100 | Tav. 1 |
| | | | |