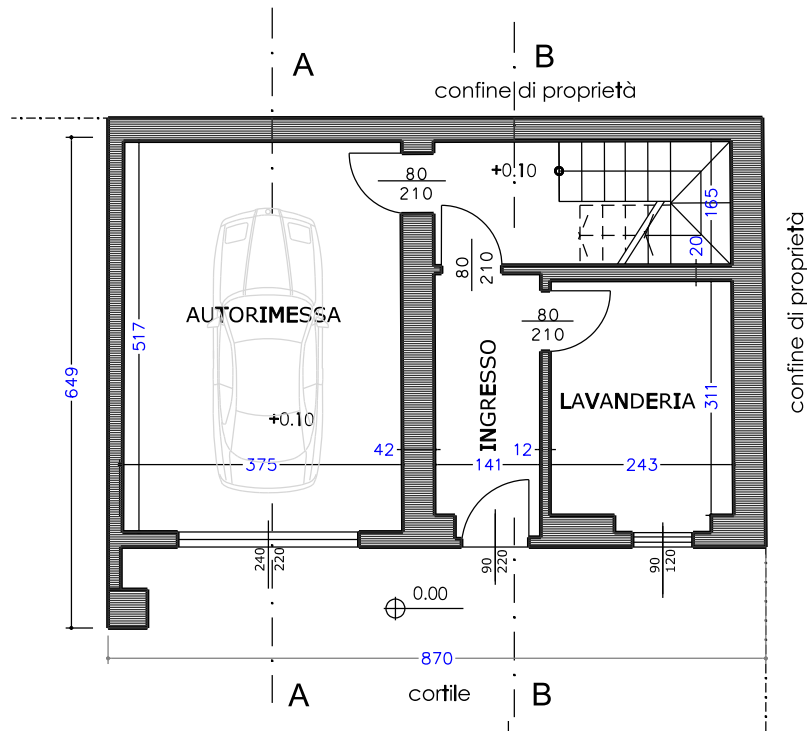
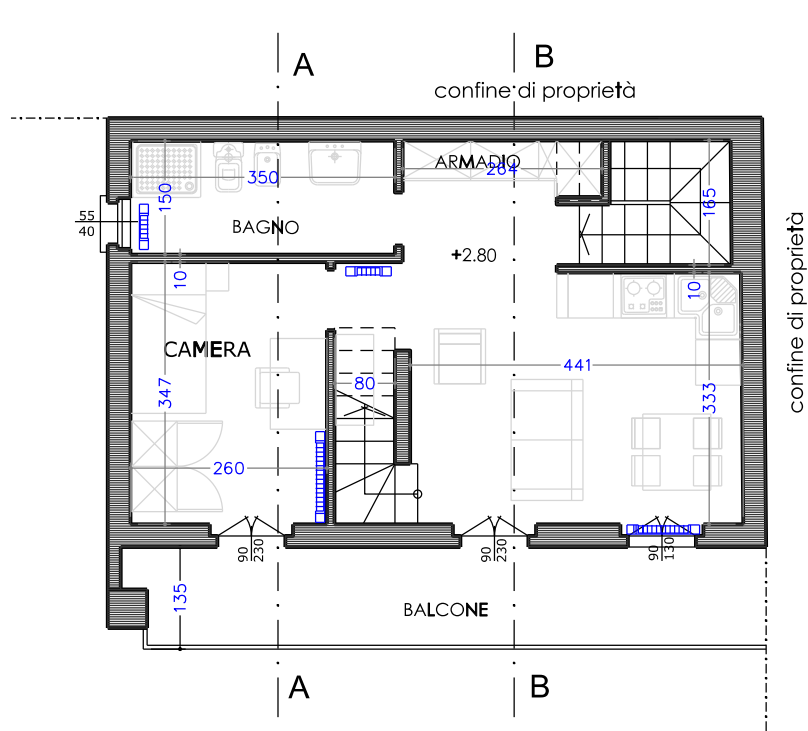


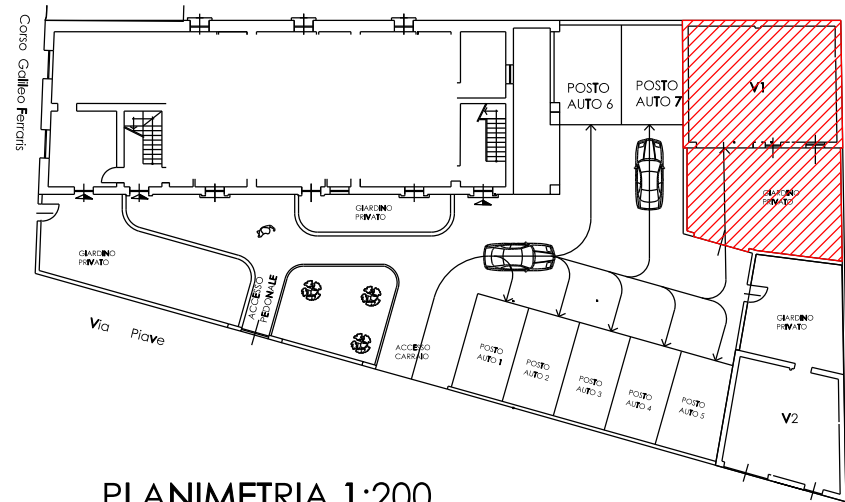
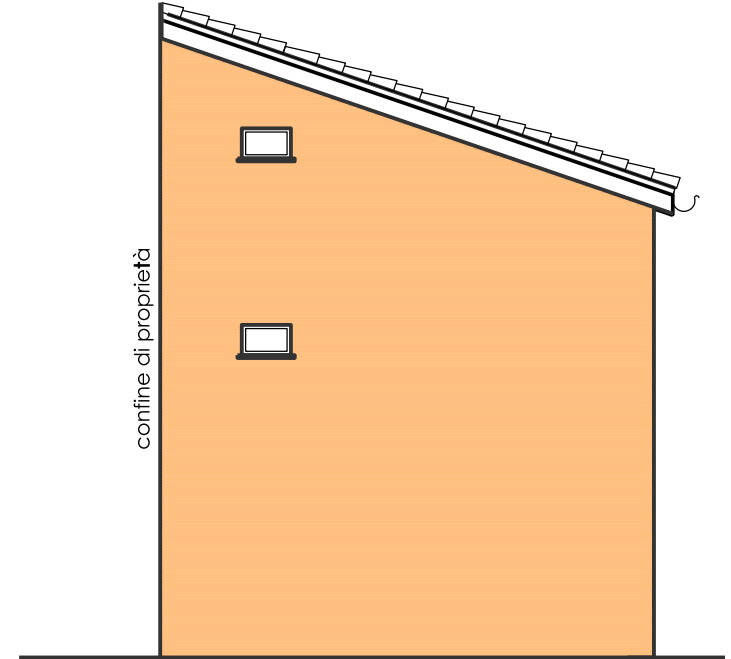
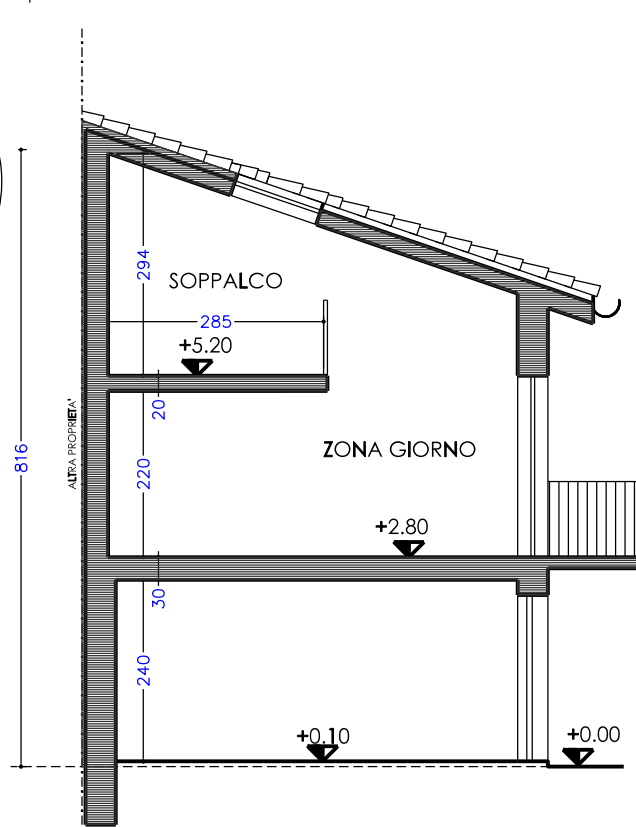
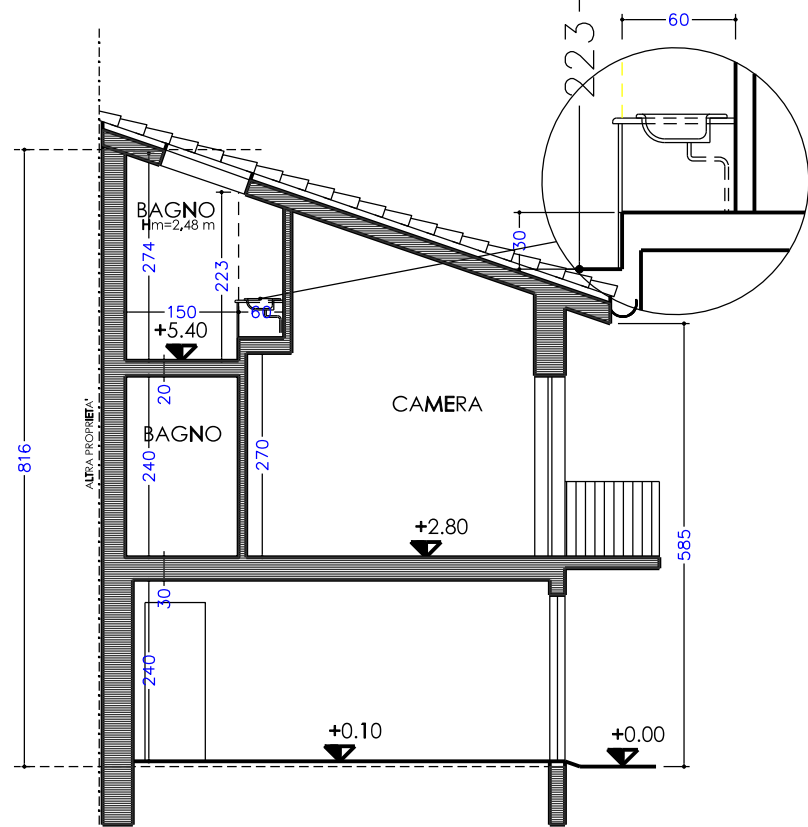
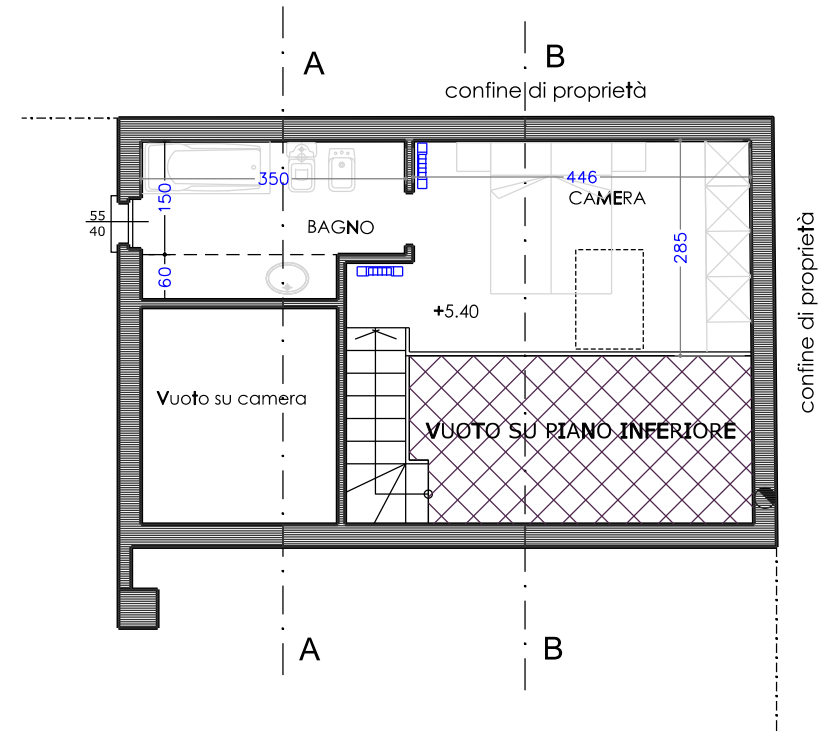
PIANTA PIANO TERRA



PIANTA PIANO PRIMO



PIANTA PIANO SOPPALCO



PROSPETTO (SUD) VERSO CORTILE

PROSPETTO (OVEST) VERSO CORTILE

COMUNE DI TRINO	Corso Ferraris ang. Via Piave	unità : V1	PROGETTO
Proprietà :	Impresa GENUARDI Corso G. Garibaldi, 4 - 15048 VALENZA	UBICAZIONE PIANTE - SEZIONI PROSPETTI	
Per informazioni commerciali :		scala 1:100	