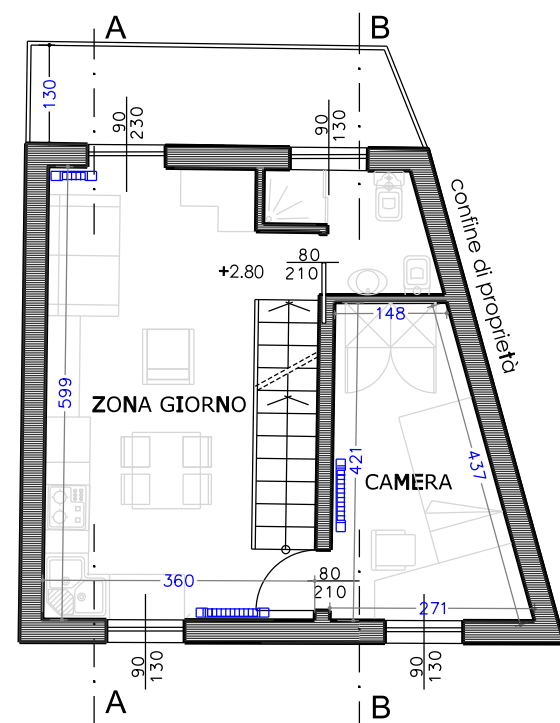
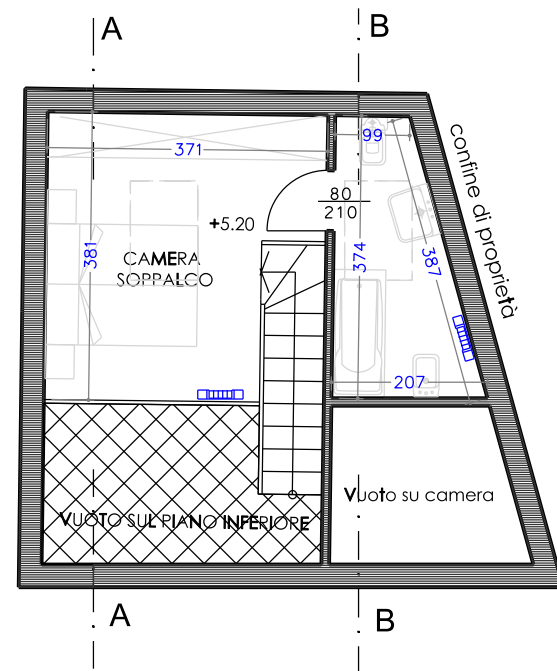


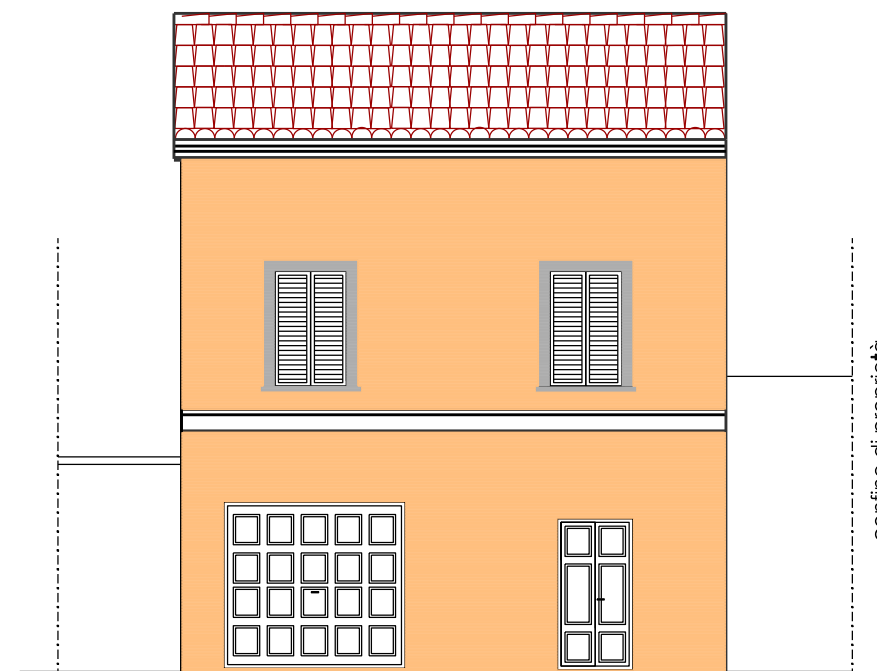
PIANTA PIANO TERRA



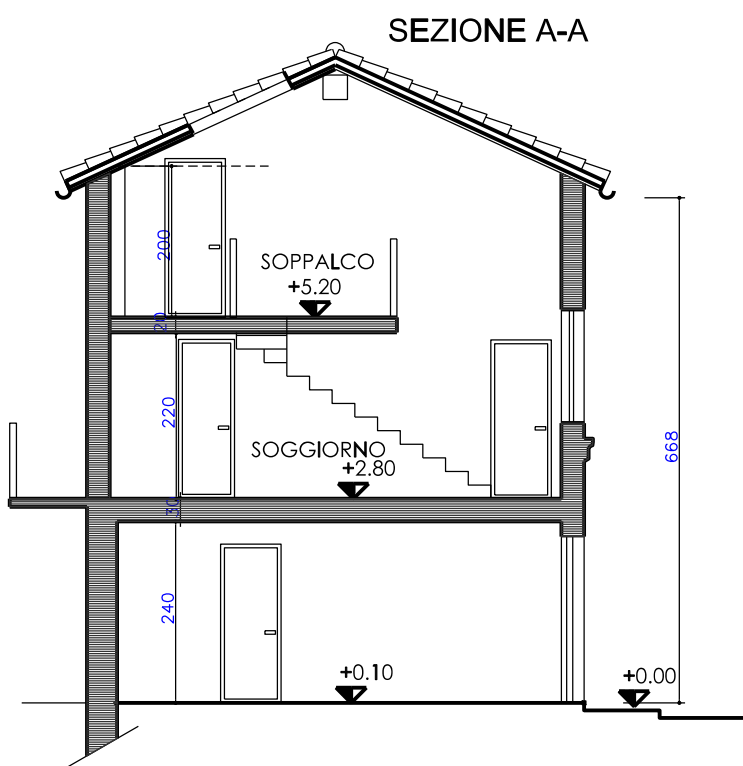
PIANTA PIANO PRIMO



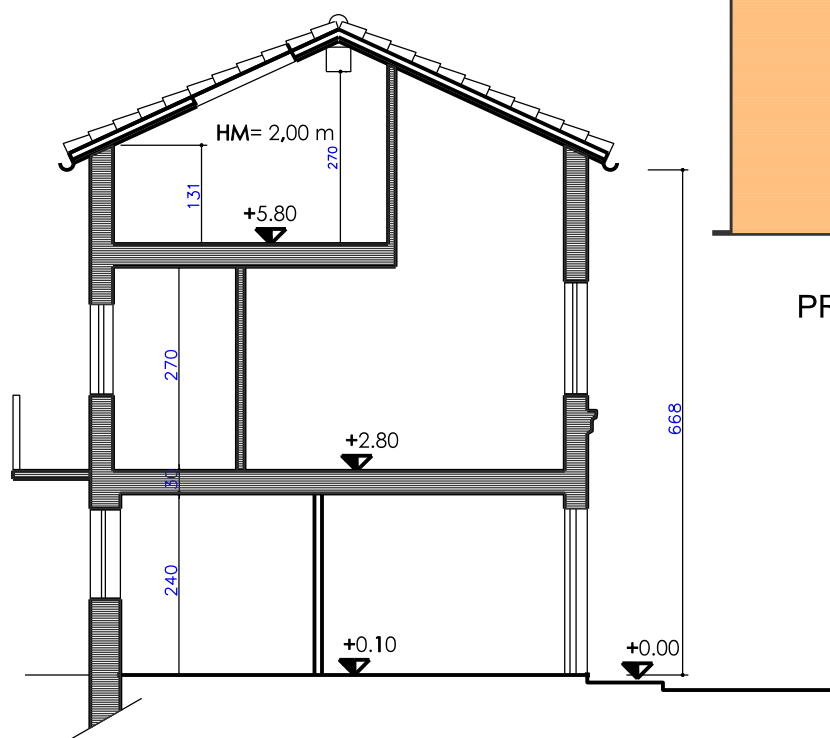
PIANTA PIANO SOPPALCO



PROSPETTO SU VIA PIAVE



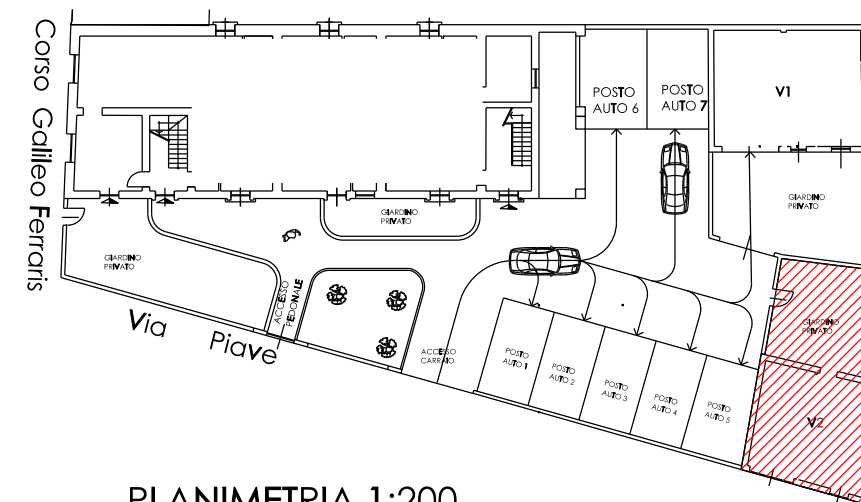
SEZIONE A-A



SEZIONE B-B



PROSPETTO SU CORTILE



PLANIMETRIA 1:200

COMUNE DI TRINO	Corso Ferraris ang. Via Piave	unità : V2	PROGETTO
Proprietà :	Impresa GENUARDI	UBICAZIONE PIANTE - SEZIONI PROSPETTI	
	Corso G. Garibaldi, 4 - 15048 VALENZA		
Per informazioni commerciali :		scala 1:100	