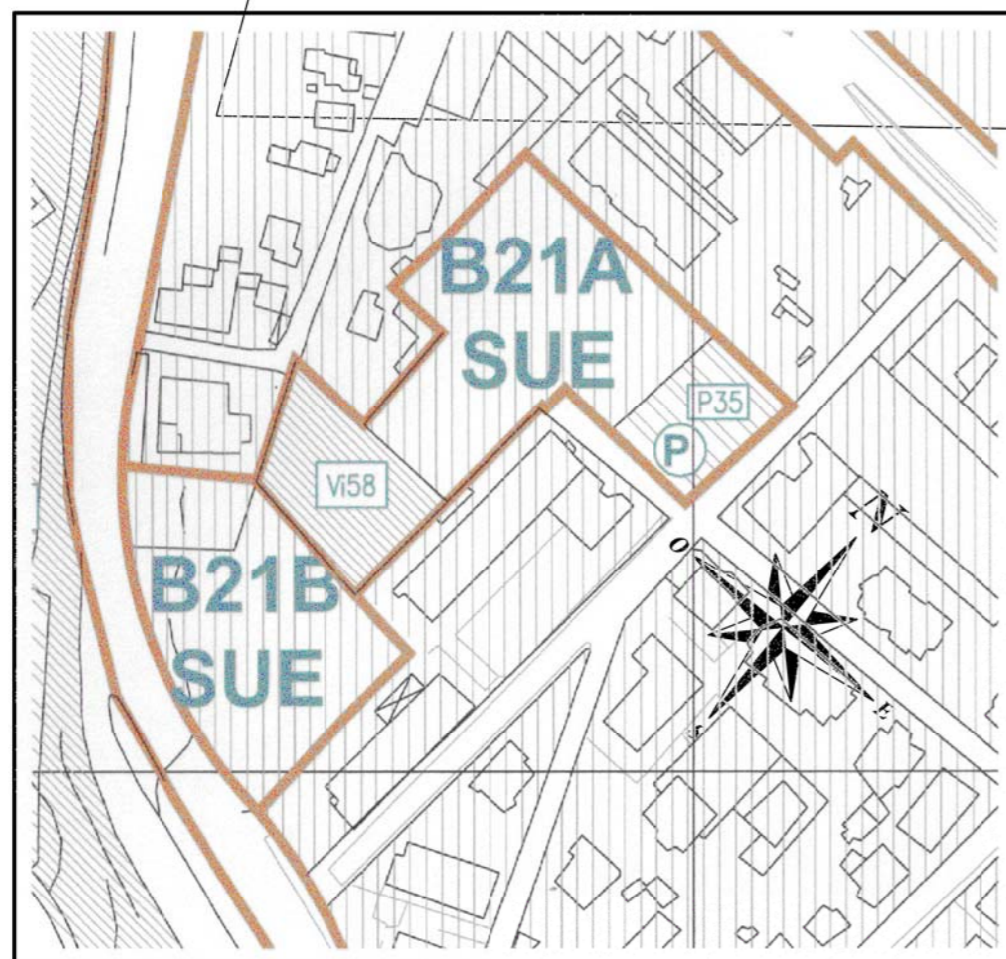
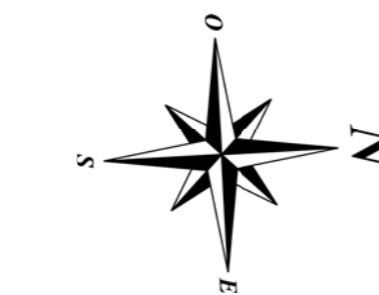


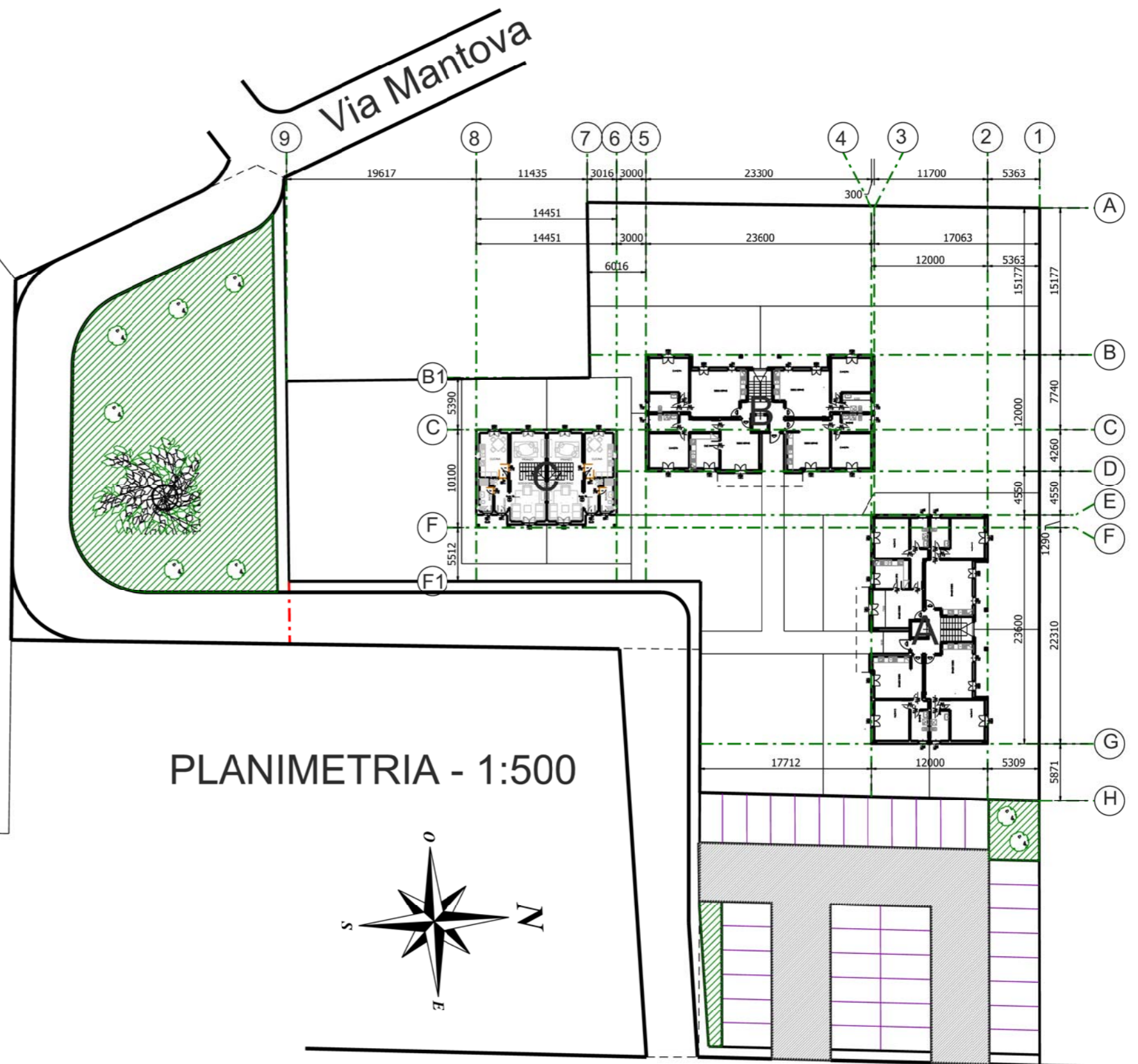
STRALCIO DA PRG-1:2000




PLANIMETRIA - 1:500



Via Piacenza



	Impresa GENUARDI Ing. Antonio Genuardi Ph.D. Project Manager Operazioni Immobiliari Corso Garibaldi 4 - Valenza (AL) - Italia	Comune: VALENZA Progetto: B21ASUE - STUDIO PER EDIFICI RESIDENZIALI PLURIFAMILIARI	Residenze "Cavallino II" Oggetto: PRG - PLANIMETRIA	Tav. 1 Scala: ---
				1