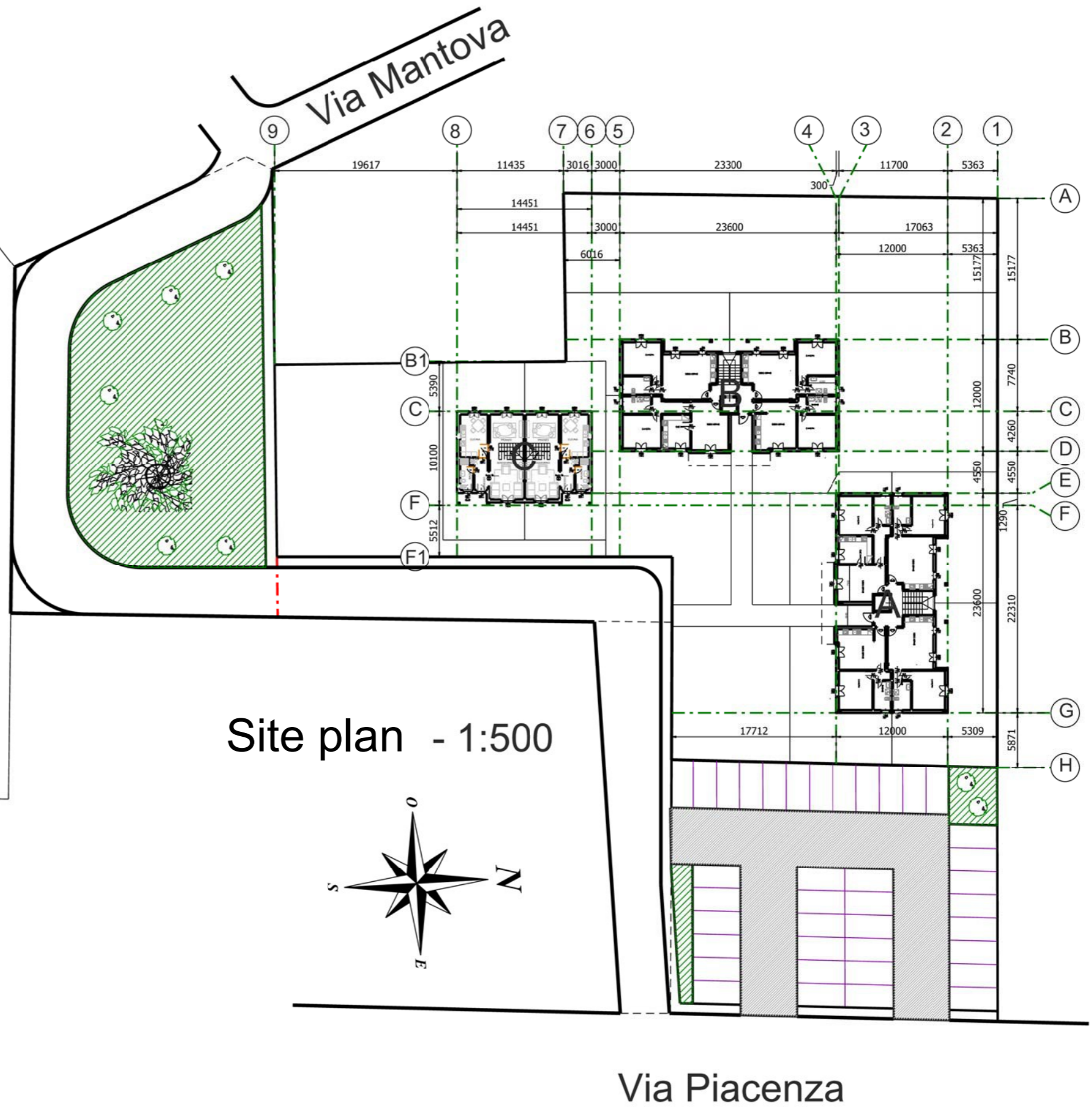
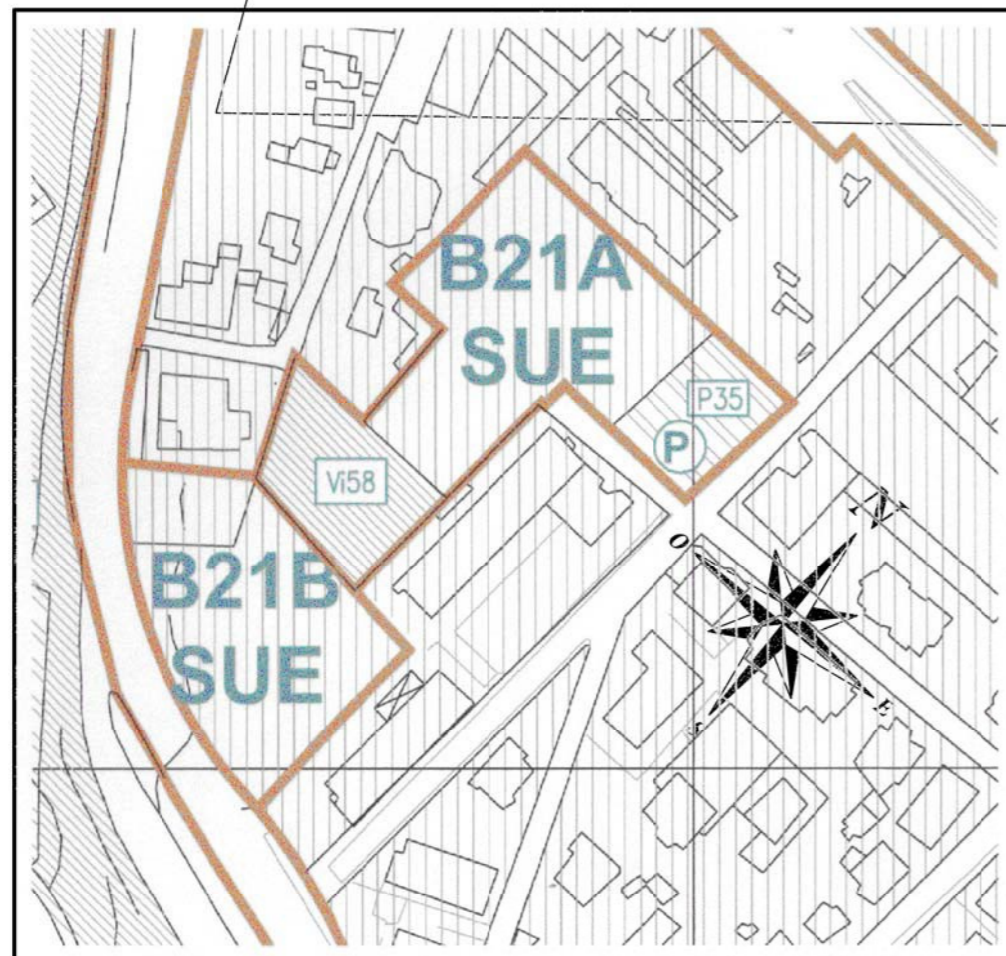



Excerpt from Town Planning Scheme - 1:2000  
 STRALCIO DA PRG-1:2000



 Impresa GENUARDI Ing. Antonio Genuardi Ph.D. Project Manager Operazioni Immobiliari Corso Garibaldi 4 - Valenza (AL) - Italia	Comune: VALENZA	Residenze "Cavallino II"	Tav.
	Progetto: B21ASUE - STUDIO PER EDIFICI RESIDENZIALI PLURIFAMILIARI	Oggetto: PRG - PLANIMETRIA	1
		Scala: ---	